

Specification for Soft Magnetic Cores

Date:

Customer:

Aug-2021

Part NO:

NL-P16013030

Spec No:

H4036

Core:

160×130×30

REV.00

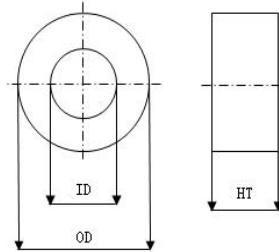
Power Transformer Cores

Bare Dimensions (in mm) :

OD: 159 ± 1

ID: 131 ± 0.5

Ht: 30 ± 0.2

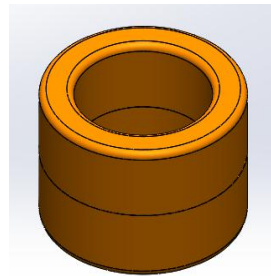


Finished Dimensions(in mm):

OD: 166 ± 1

ID: 125 ± 1

Ht: 34 ± 1



Core Material:Nanocrystalline

Type of Finish: Plastic Casing

Rohs Directive

Rated Dimensions:

A_{Fe} : 3.37 cm²

L_{Fe} : 45.5 cm

M_{Fe} : 1106 ± 50 g

Characteristics:

1 Setting values: 20KHz,0.5T N1:N2=1:1

Specified value; $P_s \leq 30W/Kg$ $B_r \leq 0.28T$

Testing device: LINKJOIN MATS-3010SA

2 Setting values: 1KHz,0.3V N=1

Specified value; $AL \geq 22 \mu H$

Testing device: Tonghui TH2826A LCR Meter

Nanocrystalline material :1K107B

Saturation flux density $B_s \geq 1.25T$

Permeability level μ : 30000 @ 1 KHz



Hero Magnetic Development Co.,Ltd

Specification for Soft Magnetic Cores

Date:

Customer:

Aug-2021

Part NO:	NL-P16013030	Spec No:	H4036	Core:	160×130×30	REV.00
----------	--------------	----------	-------	-------	------------	--------

Operation Temperature range: -40°C~+130°C

Final inspection: 100% tested AQL:1,5 GB2828II

Comments: Rohs compliant

Change records

PS Index	PS Revision	Content	Reason	Date	Changing	Approval
01	00	AS Spec.	Initial Release	2021.8.7	HaiYan Ding	Hanson
DRAWN		CHECKED		RECHECKED		APPROVED
HaiYan Ding		LiJun Sun		David		Hanson